

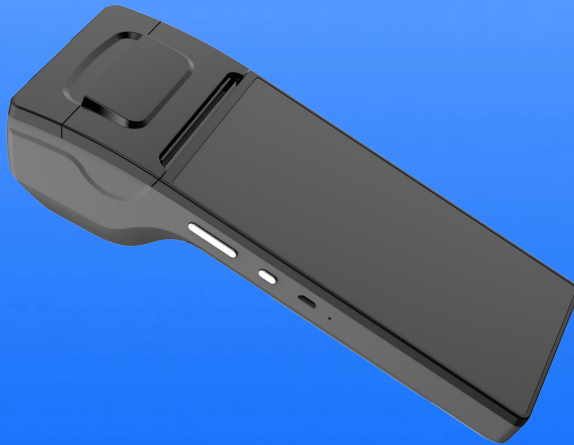
# XIAMEN GOODCOM TECHNOLOGY CO., LTD

## GT81

The portable **Android POS Terminal** can be used in variety of market applications, such as food takeaway/delivery service, hotel, taxi, lottery, bus tickets, bill payment, mobile airtime top-up/ recharge, mobile payment (deposit & withdraw), online shopping, etc.

### Key Features:

- connectivity: WIFI,4G,3G,GPRS, SMS, bluetooth
- 6 inch touch screen
- android 7.1OS
- 45mm paper
- 8Gb RAM, 64Gb flash
- battery last 8~10 days when standby
- Free SDK & Free APP for Email Printing, USSD Top Up, Car Parking
- Bluetooth Print/Cloud Print
- Can work without battery. Powered by Adaptor or Battery separately ( Light Points )



**GOODCOM**  
Goodcom Technology CO.LTD

## Parameter

	Items	Description
Hardware/software /Mechanical	CPU	Qualcomm Quad-Core Cortex™-A7 1.1GHz
	GPU	Qualcomm Adreno™ 304
	RAM1	1GB SDRAM
	RAM2 (Optional)	2GB SDRAM
	FLASH1	8GB NAND FLASH
	FLASH2 (Optional)	16GB NAND FLASH
	OS	Android 7.1
	Display	6 inches color screen
	Touch screen	Multipoint capacitive touch screen
	Keyboard	Power key, Volume key
	WIFI	2.4G(802.11b/g/n) 5G (802.11ac)
	Bluetooth	BT 4.0
	GPS	GNSS gpsOne Gen 8B standalone assisted,XTRA
	Camera (optional)	5 Mega-pixel
	Wireless	2G: GSM/GPRS/EDGE 3G: WCDMA 、 TD-SCDMA 、 CDMA2000 4G: LTE: FDD/TDD
	Battery	7.4V/2600mAh
	USB	USB 2.0
External memory card	TF card	

	Magnetic Card <b>(optional)</b>	Protocol: ISO 7811/7813 Speed: 10cm/sec ~ 150cm/sec Head Life: 800 thousand times
	SmartCard <b>(optional)</b>	Protocol: ISO 7816 Supported Card Type: CPU Card(Bank)
	NFC <b>(optional)</b>	Protocol: ISO 14443A Read Distance: 5cm Supported Card Type: Mifare S50 Mifare S70, Mifare Ultralight CPU Card(Bank)
	Dimensions	225mm*87mm*58mm
RF transmit frequency	Module A <b>(optional)</b>	2G: GSM/GPRS/EDGE: B2/B5
		3G: Five-Band UMTS/HSDPA/HSPA+ : B1/B2/B4/B5/B8
		4G: Eight-Band LTE-FDD: B2/B4/B5/B7/B12/B13/B17/B25/B26
	Module E <b>(optional)</b>	2G: GSM/GPRS/EDGE: B2/B3/B5/B8
		3G: Quad-Band UMTS/HSDPA/HSPA+: B1/B3/B5/B8
		4G: Six-Band : LTE-FDD: B1/B3/B5/B7/B8/B20 Quad-Band: LTE-TDD: B38/B40/B41
Application environment	Operating temperature	-15℃ ~ 55℃
	Relative humidity	10%~95%
	Environment noise	≤60dB(A)
	Atmospheric pressure	86~106kPa
	Frequency stability	<2.5ppm
	Receiver sensitivity	<-104dBm
	GSM protocol	ETSI GSM Phase 2+

	Transmit power	<2W(GSM , EGSM), <1W(DCS , PCS)
GSM parameters	SIM card interface	1.8V/2.95V Dual SIM card
	Antenna	Internal,50Ω impedance,3dB gain
Power supply	AC input voltage	100V~240V AC 50/60Hz
	Power adapter output	DC 9V/3.5A
Micro Printer	Printing method	Thermal-line dot method
	Paper	Thermal roll paper (standard) 57*45 mm
	Effective Printing area	48mm
	Speed	Maximum 70mm/sec(480 dot line/sec)
	Printing resolutions	8 dots/mm
	Character	12*24dots and 24*48 dots
	Number of columns	32columns/line
	Printing head life	Pulse resistance:100 million pulses/dot (under our standard conditions); Abrasion resistance: paper traveling distance 50km (print ratio:25% or less)